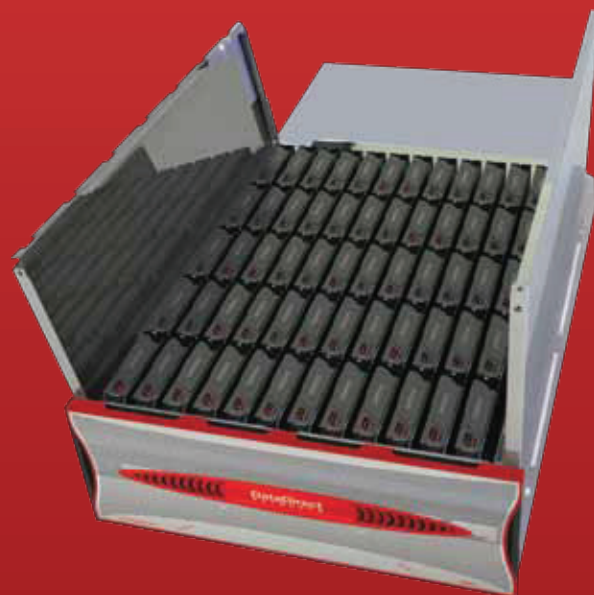


# S2A6620 Storage System

## High Performance Modular Storage Appliance

Applications, such as internet services, online transaction processing (OLTP), email, video-on-demand, video surveillance, and on-line video games, are extremely demanding on storage performance, capacity, reliability and scalability due to their nature. Growing businesses constantly face the challenge of delivering IOPS performance to database driven applications and throughput performance to the growing stores of unstructured content. With traditional storage technologies, these applications conflict for storage resources and force IT managers to compartmentalize applications to multiple dedicated storage systems which increases complexity, capital expense and cost of ownership.

For over ten years, DataDirect Networks has been providing storage solutions for high performance and high capacity applications. The S2A6620 leverages innovative capabilities from the award winning performance and reliability of the industry-leading S2A product family. This modular, high-density appliance delivers the highest quality data services and eliminates the need for multiple systems; minimizing floor space, power consumption, and storage management complexity.



## Features

- Flexible architecture – DAS, SAN, NAS
- High Performance – up to 350,000 IOPS, 2GB/s throughput
- Scale from 2TB – 240TB
- Simple to install, monitor and manage
- High availability – RAID 1/5/6, SATAAssure™, Active/Active controllers
- Tiered storage – SSD, SAS and SATA intermix
- High Density – 120 Drives in only 8U

## Applicable Markets

### All Industries

- High-Speed NAS Storage
- Rapid Backup/Restore (D2D)
- VTL/De-dup storage
- Remote office/Disaster Recovery
- VMware storage
- eDiscovery/Email
- OLTP workloads
- Data warehouse

### Digital Media

- Broadcast, Post, VOD, IPTV
- Animation, color correction rendering clusters

### HPC

- Modular High Speed Cluster Storage

## Innovative S2A6620 Capabilities:

### Performance

Designed for mixed workload environments, S2A6620 delivers extreme performance with 2GB/s and 335,000 IOPS

### Density

As the densest system in its class, the S2A6620 manages up to 60 drives in an ultra compact 4U form factor. By adding a single expansion enclosure you can double these numbers to a leading 120 drives in only 8U.

### Data Protection

Data integrity is verified on every read operation with SATAssure™. Silent data corruption is detected and corrected automatically and transparently

### Availability

With active-active controllers, hot swappable hardware components and rolling software upgrades the S2A6620 delivers high reliability

### Affordability

Total storage cost is significantly reduced by intermixing of high-performance and high-capacity drives in a single enclosure. User friendly management tools simplify storage administration

### Standard Software Features

|                         |                     |            |                 |
|-------------------------|---------------------|------------|-----------------|
| LUN Mapping and Masking | RAID 1,5            | CLI/GUI    | SNMP Monitoring |
| Port Zoning             | Journalled Rebuilds | SSH/Telnet | and Trap        |

### Optional Software Features

|       |                           |
|-------|---------------------------|
| RAID6 | SATAssure™ Data Integrity |
|-------|---------------------------|

### Product Attributes

|                           |   |
|---------------------------|---|
| RAID Controllers          | 2 (Active-Active)                               |
| Maximum Disk Throughput   | 2GB/s   |
| Maximum Cache IOPS        | 335,000   |
| Maximum Disk IOPS         | 63,000  |
| Protection Level          | RAID 1 (1+1), RAID 5 (4+1,8+1), RAID 6(4+2,8+2) |
| Number of drives          | 2-120 (base +expansion)                         |
| Number of LUNs            | 512   |
| Host logins               | 512   |
| Cache                     | 6GB - mirrored and battery backed               |
| Power and Cooling Modules | 2 (redundant hot plug)                          |
| Drives per enclosure      | 60  |
| Expansion enclosure       | 1   |
| Drive Types               | SSD, SAS and SATA                               |
| Host connectivity         | 4 x FC-8  |
| Client Support            | Windows, Linux, Unix, Mac OS                    |
| Management Interface      | Web GUI, CLI, SSH, Telenet                      |

### Enclosure Environmental Attributes

|                        |  |
|------------------------|--|
| Dimensions             | Height - 7.0" (17.8 cm)<br>Width - 17.56" (44.6 cm)<br>Depth - 36.2" (92 cm) without bezel and cable management arms;<br>40.6" (103 cm) with bezel and cable management arms |
| Rack Height            | 4U   |
| Voltage Range          | 208-230VAC   |
| Operating Environment  | 10° to 35° C   |
| Frequency              | 47-63 Hz   |
| Average Power (SATA)   | 1,098W - Base unit (drives and controllers)  |
| Average Cooling (SATA) | 3,704 BTU/hr- Base unit, (drives and controllers)  |
| Average Power (SAS)    | 1,454W - Base unit (drives and controllers)  |
| Average Cooling (SAS)  | 4,960 BTU/hr- Base unit, (drives and controllers)  |
| Weight                 | 240lbs (109 Kg) w/drives; 120lbs (54.5 Kg) w/o drives  |
| Certifications         | CSA_US, CE, and FCC. C-TICK and BSMI (tested, OEM Submittal required)  |

## Affordable and Available Modular Storage

“DDN’s S2A6620 provides scalable, reliable, and cost-effective solutions for mid-sized companies that are dealing with massive information creation and retention needs”

-IDC

## Preparing for Unpredictable Future

“What’s needed are new architectural approaches that maximize application performance and storage scalability—such as DDN’s S2A6620”

-Illuminata

Learn more at [ddn.com/6620](http://ddn.com/6620).

**DataDirect**<sup>™</sup>  
NETWORKS

ddn.com

1.800.TERABYTE

9351 Deering Ave.  
Chatsworth, CA 91311  
USA